

# TN-ITS – Bringing Fresher Map Data to Intelligent Transport Services

Christian Kleine  
President of TN-ITS



**TN-ITS**

Map Update Exchange

# Base Layer Data



# TN-ITS - What

## Exchange information on changes in road attributes

- Road Data used in digital maps for ITS Services
- Road attributes based on regulations
  - Speed limits
  - Other restrictions and warning signs

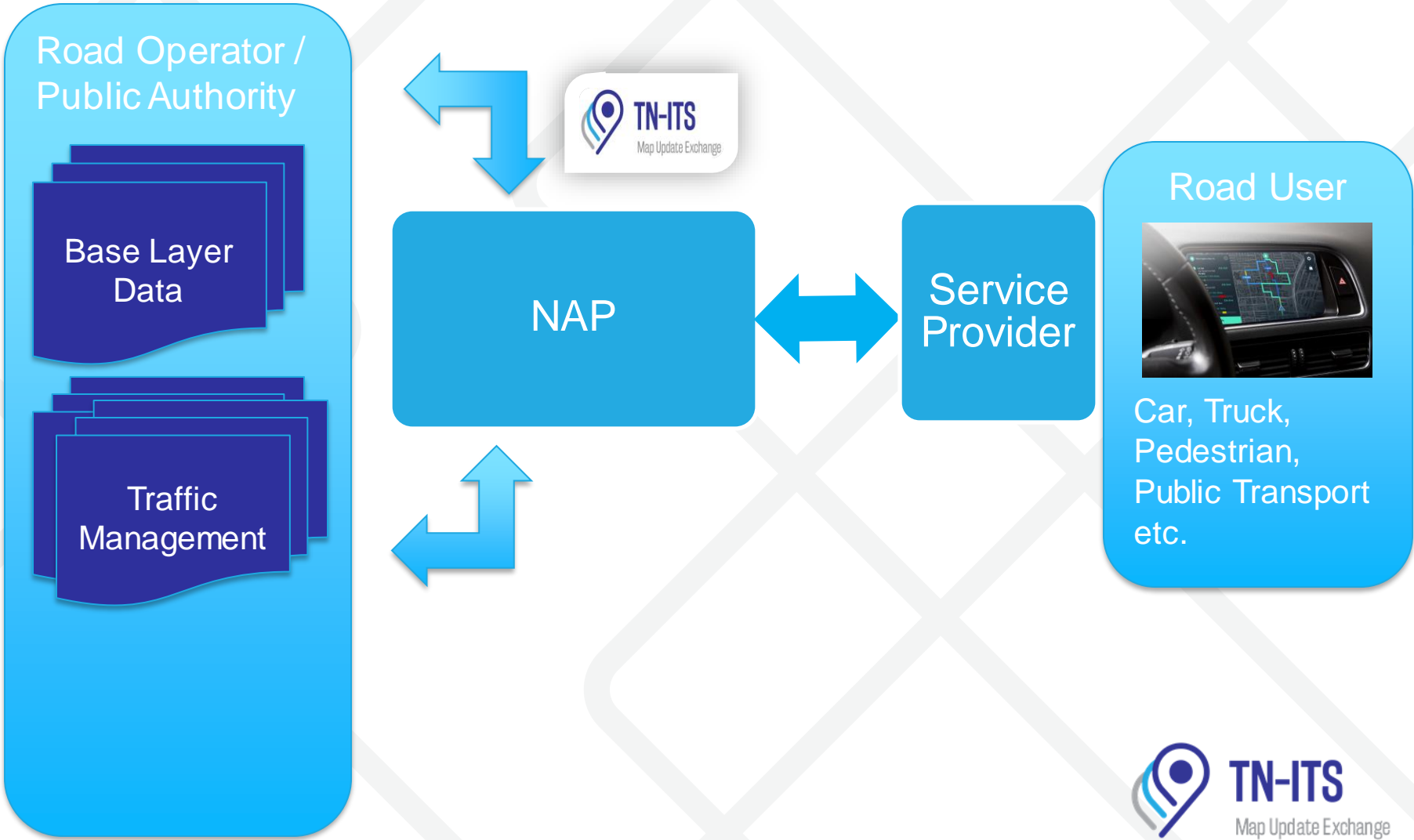


# TN-ITS - Why

Digital maps for ITS need to be reliable, fresh and trusted

- Delegated Regulation on RTTI (static data)
- **Road authorities** initiate changes through regulations
  - ➔ main source for road data updates
    - Requires Digital storage and maintenance
    - Common exchange format is needed

# Position and role within the digital infrastructure



# TN-ITS Association

- ❑ Coordinated by ERTICO
- ❑ Members:
  - ❑ Road Authorities
  - ❑ Map Provider
- ❑ Supporting EU Policy on Data Sharing
- ❑ Standardization CEN TS 17268
- ❑ Implementation Support
- ❑ <https://tn-its.eu>



In collaboration with:



# Connecting to Platforms/Initiatives

- EU-EIP, SA 4.6 National Access Point
- DATEX II
- Open Auto Drive Forum (OADF)
- SENSORIS
- CEN/TC 278 WG7
- TM2.0
- CCAM Platform WG3 “Physical and digital Infrastructure”



Open AutoDrive Forum



SENSORIS



# TN-ITS GO : further deployment in EU

- ❑ 20 Partners in Europe
- ❑ Towards TN-ITS Services in 13 Member States
- ❑ Minimum coverage TEN-T Network – ambition is more
- ❑ Feedback Loop from Map Provider
- ❑ New features supporting new use cases (multimodal)
- ❑ Start Jan 2018 – 4 years

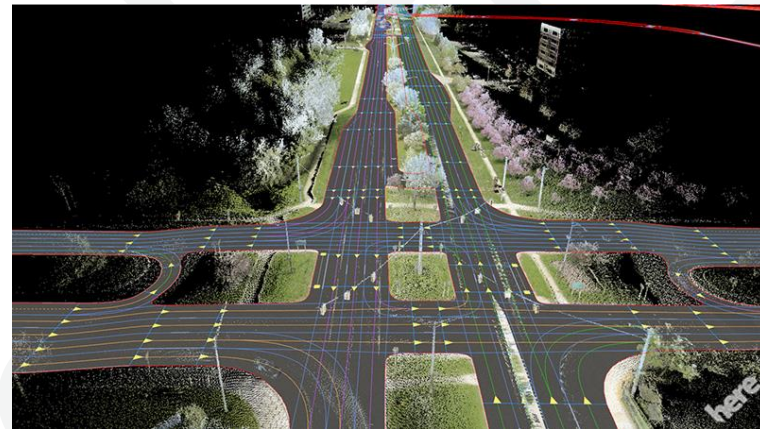


TN-ITS GO is co-financed by the European Union's Connecting Europe Facility, grant agreement no. MOVE/B4/SUB/2017-63/CEF/PSA/SI2.770546

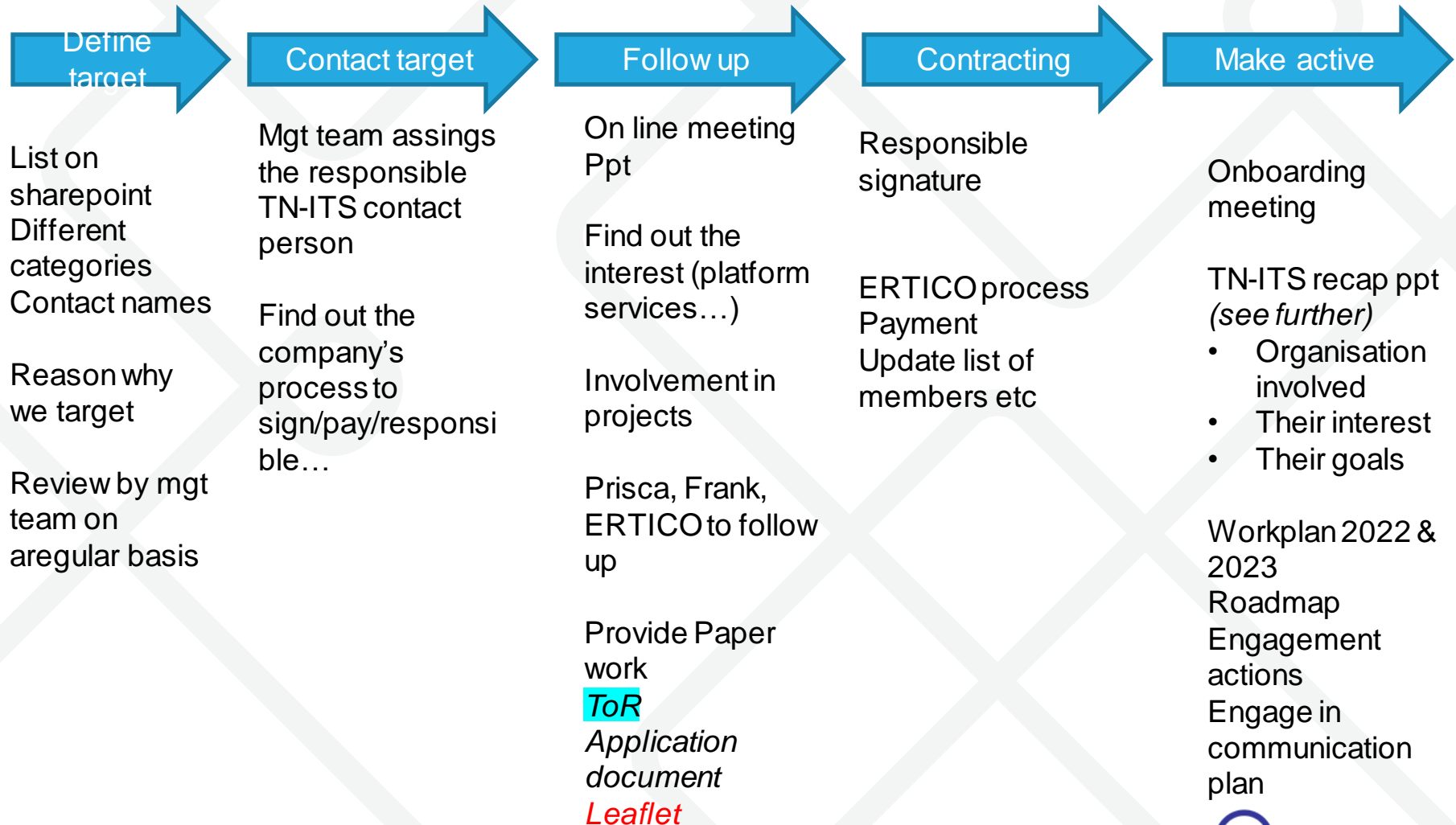


# TN-ITS a proven process for Map Update Exchange

- Trusted Source
- Incremental updates – pointing to the changes
- Daily updates – near real time
- Standardization – CEN/TS17268 (CEN TC2168 WG7)
- Machine readable data
- Automatization



# TN-ITS Account engagement process



# Membership service and fee structure (2022)

	Active Member	Support Member	Implementing Member	Application or data provider
	An Active Member has an active role in constituting part of the data chain for ITS spatial data. It is either an operational (public) ITS spatial data provider/publisher, or an ITS spatial data user/processor (a map maker or another party bringing serving ITS spatial data by means of applications to the end user	A Support member advises one or more working group(s). A supporting member receives information about the business of TN-ITS, and is invited to attend seminars and forum meetings held by the Platform.	This is a member that actively implements the TN-ITS service and needs support with its deployment	This member seeks the added value of the TN-ITS platform to be steer authorities to deliver data that supports its application (Application Provider) or wants to help the authorities to provide the right data and/or to improve its quality (data provider)
<b>Innovation and Strategy</b>				
Roadmapping - priority setting in EU services - Standards definition				
Support Road Authorities to comply European Commission's Delegated Regulation 2015/962				
Assessment (of commission regulatory proposals (example))				
Development of Technical Specifications				
Workgroup and Task Force contributions				
<b>Deployment</b>				
UML availability				
Consultancy implementation				
Quality feedback (Feedback loop) test in operation (continuous)				
Quality feedback (Feedback loop) test in development (2/year)				
Contribution/Preferred partner in EU Call proposals (DEP, ...)				
<b>Dissemination and licenses</b>				
Promotion				
Logo license (Visual)				
Digital certificate (Digital trust)				
Awareness creation (webinars and publications)				
Organisation mentioned on TN-ITS and related projects dissemination material (website/brochure/...)				
<b>Voting rights</b>				
GA vote entitled				
<b>Fee (EUR/Y)</b>				
ERTICO membership	6000	600	1500	3000
ERTICO project partner (like NAPCORE, TN-ITS GO etc...)	4000	400	1000	1500
Start Up (legal company, less than 5 years existence, less than 10 people, ERTICO registered start up, less than 1MEURO yearly turnover)			0 (included in their project budget)	1500



[info@tn-its.eu](mailto:info@tn-its.eu)

[www.tn-its.eu](http://www.tn-its.eu)

[\*\*christian.Kleine@here.com\*\*](mailto:christian.Kleine@here.com)